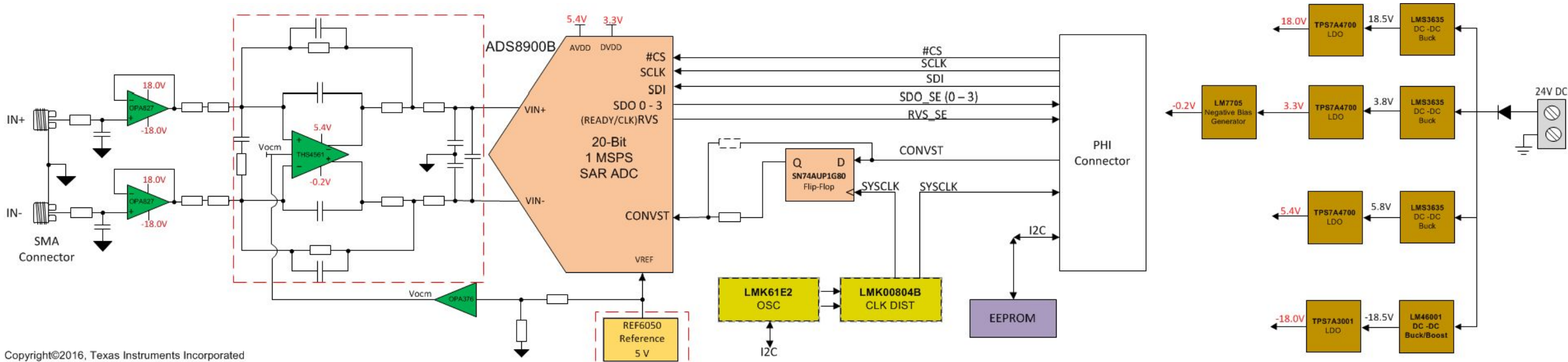
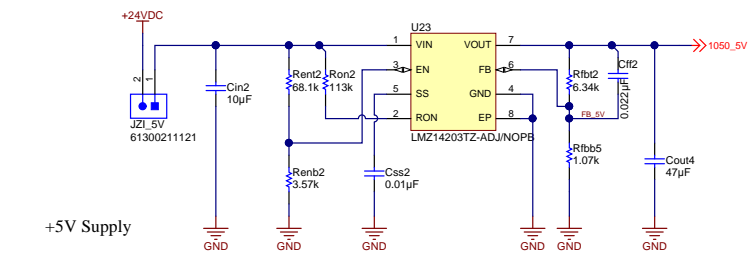
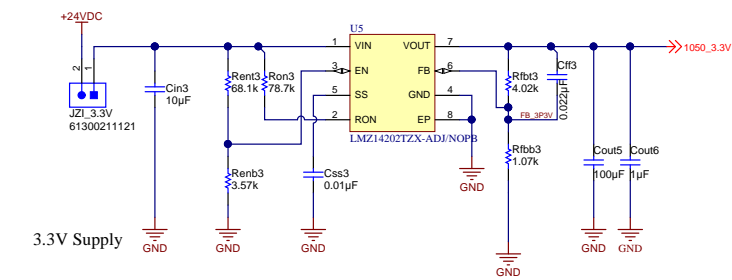
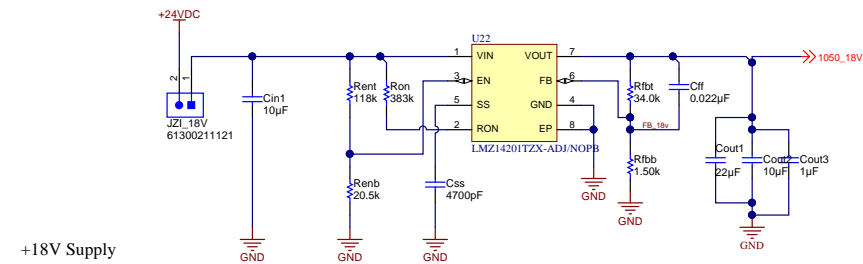
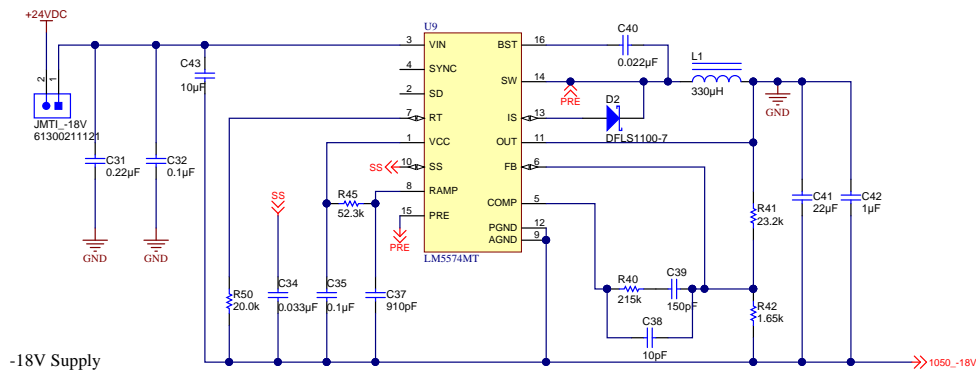


Revision History				
Rev	ECN #	Approved Date	Approved by	Notes
N/A	N/A	N/A	N/A	N/A

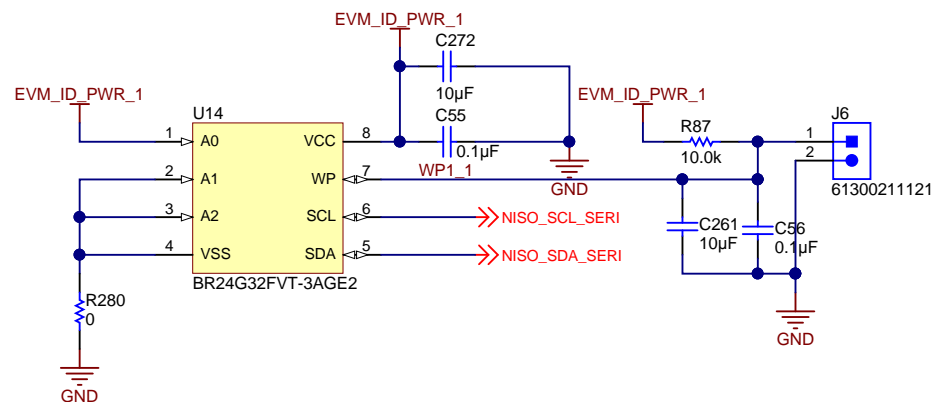
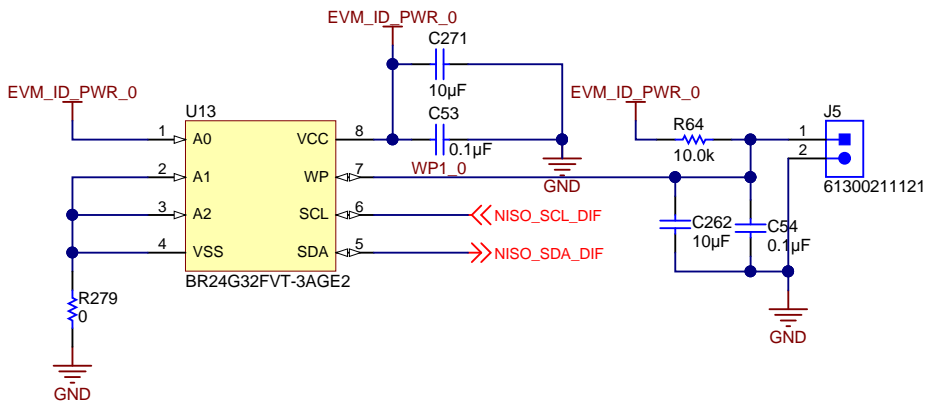
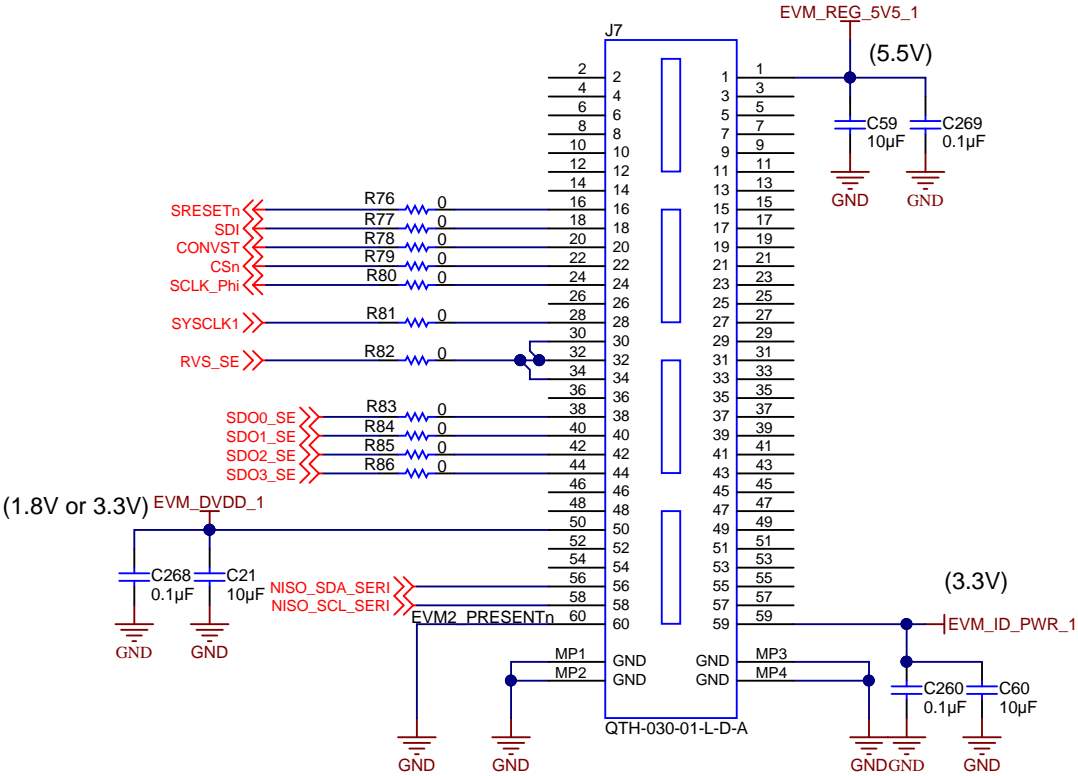
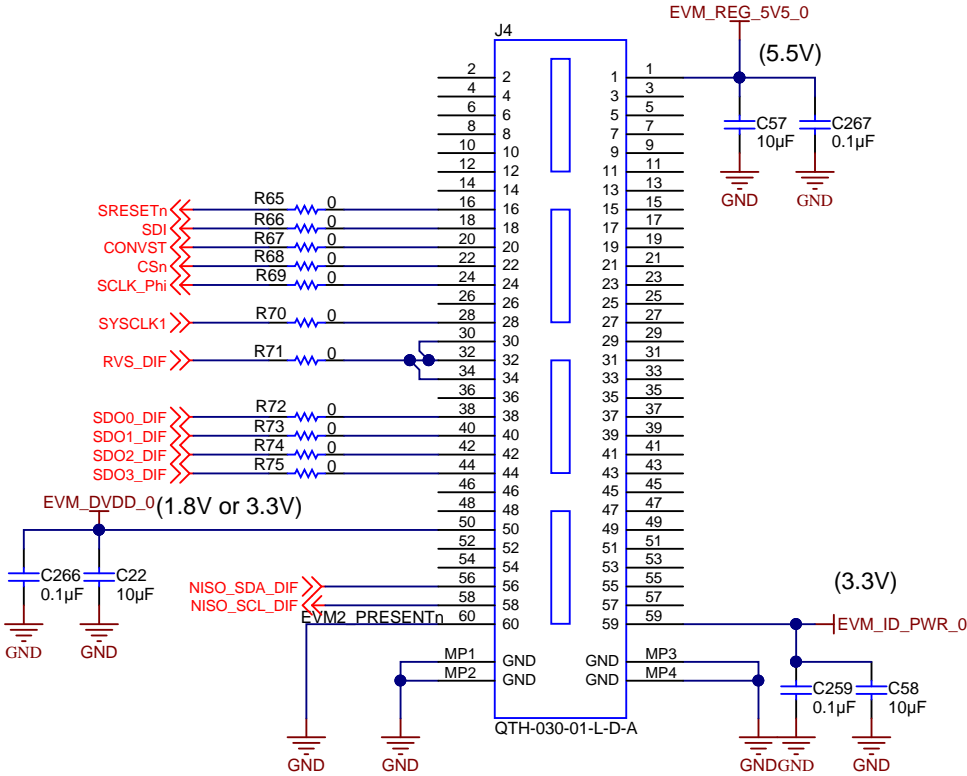


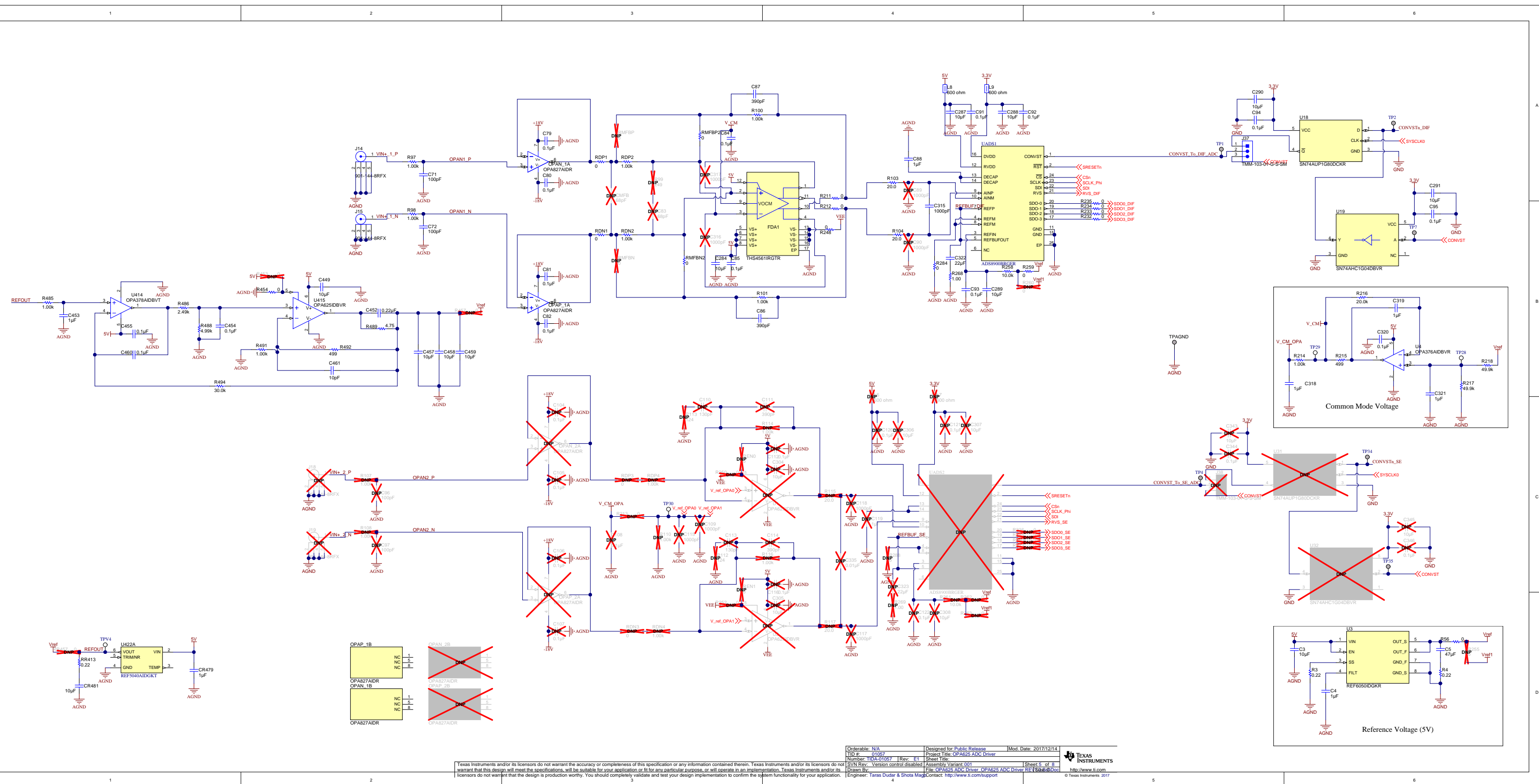
Copyright©2016, Texas Instruments Incorporated

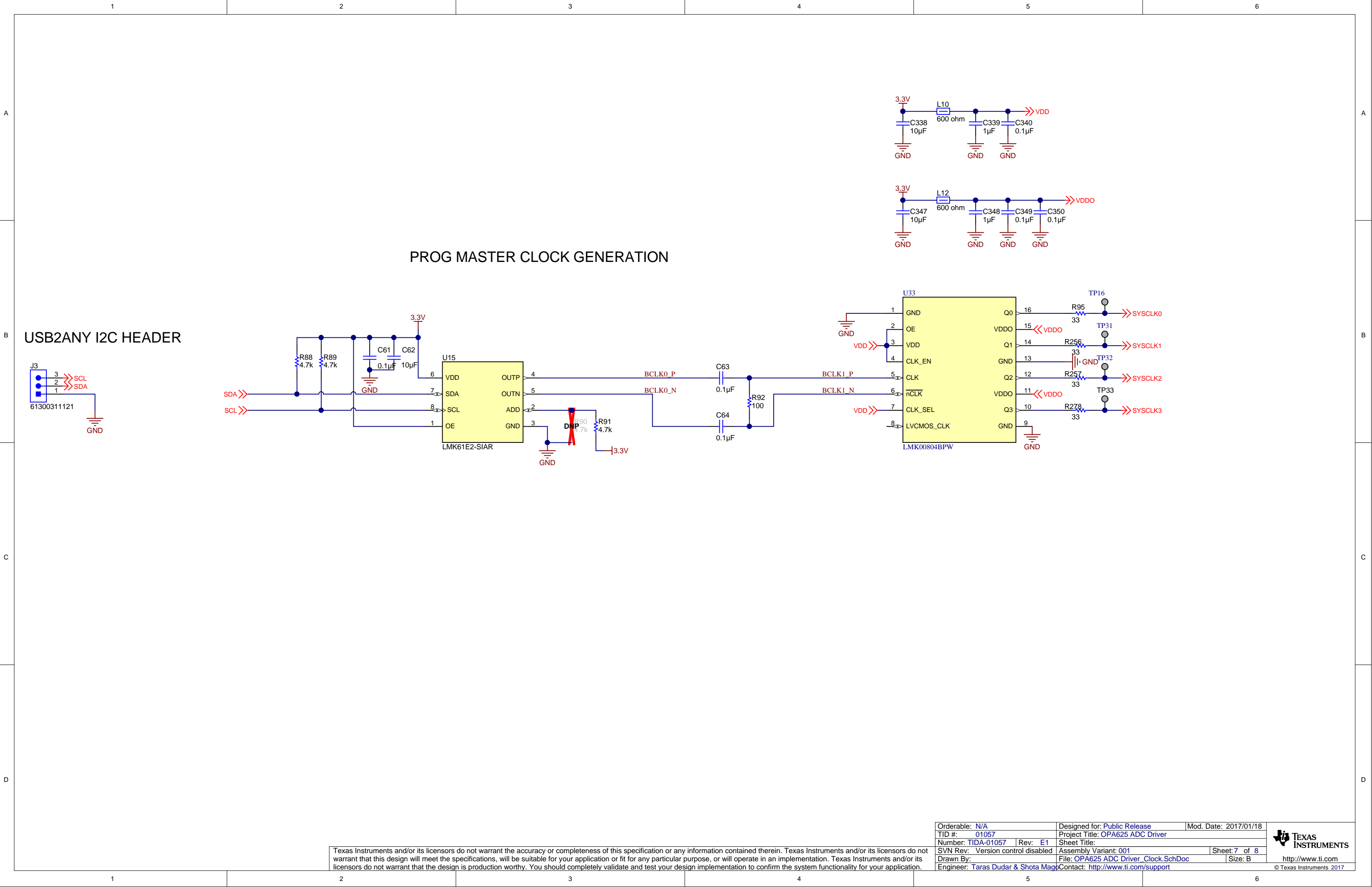
Texas Instruments and/or its licensors do not warrant the accuracy or completeness of this specification or any information contained therein. Texas Instruments and/or its licensors do not warrant that this design will meet the specifications, will be suitable for your application or fit for any particular purpose, or will operate in an implementation. Texas Instruments and/or its licensors do not warrant that the design is production worthy. You should completely validate and test your design implementation to confirm the system functionality for your application.



PHI PLATFORM
INTERFACE







Texas Instruments and/or its licensors do not warrant the accuracy or completeness of this specification or any information contained therein. Texas Instruments and/or its licensors do not warrant that this design will meet the specifications, will be suitable for your application or fit for any particular purpose, or will operate in an implementation. Texas Instruments and/or its licensors do not warrant that the design is production worthy. You should completely validate and test your design implementation to confirm the system functionality for your application.

Orderable: N/A		Designed for: Public Release		Mod. Date: 2017/01/18	
TID #: 01057		Project Title: OPA625 ADC Driver			
Number: TIDA-01057		Rev: E1		Sheet Title:	
SVN Rev: Version control disabled		Assembly Variant: 001		Sheet: 7 of 8	
Drawn By:		File: OPA625 ADC Driver_Clock.SchDoc		Size: B	
Engineer: Taras Dudar & Shota Mago		Contact: http://www.ti.com/support			

